



2024 ACTIVITY REPORT

STAYING THE COURSE, **strengthening the response to pandemics**



Cameroon.

A nurse collects a sputum sample from a child presenting symptoms of tuberculosis for diagnostic purposes.

Publication director: Éric Fleutelot

Coordination: Bruno Leprêtre, Jérémy Lavaure, Déborah Malka

Editorial and graphic design, writing, production:

ANIMAL  PENSANT

The team would like to thank the Health Department at Expertise France, as well as the experts, technical and financial partners, and project leaders who contributed to the preparation of this report.

Printing: This document was printed by Imprimerie Solidaire, a socially inclusive printing company where 80% of the production staff are persons with disabilities. The company meets environmental standards and holds PEFC, FSC, and Imprim'Vert® certifications.

Photo credits: Cover: Maya Media/Expertise France — P. 2: The Global Fund/ Brian Otieno — P. 5: The Global Fund/Vincent Becker — P. 11: lalicorn2025/ Jorge Lareau ; Maya Média — P. 11: lalicorn2025/Jorge Lareau; Maya Média — P. 13: Iryna Butenko — P. 15: Sarah Respaut — P. 16: Instant2Vie Studio— P. 17 : The Global Fund — P. 19: Instant2Vie Studio — P. 21 : The Global Fund/Karin Schermbrucker — P. 23: Bart Koetsier — P. 24 : Zarni Phyo — P. 27: Bart Koetsier — P. 29: Instant2Vie Studio— P. 31: Adesco Divine — P. 33: Bart Koetsier

Contents

COMMITMENTS AND RESULTS

Placing expertise, listening and solidarity at the heart of action By Clarisse Paolini	2-3
Investing in human resources in health to build sustainable health systems	4-5
2024 , record commitments, visible progress	6-9
Building a collective response to global health challenges	10-11
From emergency to resilience in the support to health systems	12-13
Civil society , driver of social and health transformation	14-15

VALUES AND PRINCIPLES

A shared foundation of respect for and promotion of human rights By Caty Fall Sow	16-17
Human rights at the heart of strategies to fight pandemics	18-19
Leaving no child or adolescent behind in the response	20-21
Integrating harm reduction into national health systems	22-23

CHALLENGES AND OUTLOOKS

A solid model , a committed ecosystem By Éric Fleutelot	24-25
Health response to climate change	26-27
Ensuring equitable access to sexual and reproductive health and rights	28-29
Recognizing and training community health workers	30-31
Outlook for L'Initiative , a shared perspective With Anne-Claire Amprou and Jérémie Pellet	32-33

COMMITMENTS AND RESULTS



Rwanda.
A community health worker prepares to conduct a malaria test on a child.



73%
OF 2024
COMMITMENTS
allocated to
least developed
countries, in
line with CICID*
priorities

* CICID: Interministerial Committee for International Cooperation for Development



CLARISSE PAOLINI,
Deputy Director
for Human
Development,
Ministry for Europe
and Foreign Affairs

Placing EXPERTISE, LISTENING AND SOLIDARITY at the heart of action

In 2024, the global context unfortunately remained defined by numerous health, climate, social and political crises. In this demanding and volatile environment, L'Initiative fully reaffirmed its role as a key player in strengthening health systems and in the fight against the pandemics of HIV, tuberculosis and malaria. Its work complements the Global Fund's efforts and aligns with France's global health strategy.

Alongside 39 partner countries, L'Initiative supported 160 new interventions, ranging from multi-year projects to short- or long-term technical assistance. This unprecedented level of activity since the program's creation represented over €115 million in funding, with particular attention given to 25 of the least developed countries, which received the majority of this support.

Confirming commitment, renewing trust

Beyond the figures, this report reflects an exceptional collective mobilization, even in the most complex environments. It highlights the renewed trust of our institutional, scientific and civil society partners who work daily to

increase the impact of our initiatives. It also attests to the steadfast commitment of the Ministry for Europe and Foreign Affairs, of the Steering Committee constituencies, of the teams at Expertise France and our partners in the field.

In Guinea, an innovative approach is strengthening the integration of responses to the three pandemics within hospital emergency services. In Chad and Rwanda, two major projects on human resources for health were launched, laying the foundations for long-term investment. Implemented in complementarity with other support from AFD Group, these actions demonstrate the strength of synergies within "Team France."

L'Initiative continues its mission, proud of the progress achieved. Always placing expertise, listening and solidarity at the heart of its work, for health systems that are stronger, fairer, more affordable and person-centered. ●

In 2024, L'Initiative transformed its commitments into tangible actions, with a major effort in developing human resources for health. Training, institutional anchoring, and recognition were key levers used to build fairer, stronger and more accessible health systems. Particular attention was paid to gender inequalities that hinder access to care and careers in healthcare. This confirms L'Initiative's ability to tackle the root causes of health system weaknesses through an integrated and cross-sectoral approach to pandemic response.

INVESTING IN HUMAN RESOURCES FOR HEALTH

to build sustainable health systems



“

SARAH RESPAUD,
Manager of L'Accélérateur,
L'Initiative

Strengthening, structuring and supporting human resources for health over time is one of L'Initiative's strategic priorities. Our aim is to improve access to and quality of care for all, and to move toward universal health coverage. Human resources for health are the foundation of health systems. Without sufficient and skilled personnel, there can be no accessible, effective, and people-centered healthcare services tailored to each context. Our projects target deep structural changes at the very heart of health systems.

Strengthening human resources for health is a strategic priority for L'Initiative. A total of €80 million was committed—representing 48% of the overall budget—to provide long-term support for partner countries' health systems. This strategic choice aims to bring about structural transformation, guided by a logic of continuity and coherence across contexts.

Training frontline health workers

In Rwanda, €5 million were committed to support a far-reaching health reform known as “4x4,” which aims to quadruple the number of health workers in four years using a gender-sensitive approach. The project focuses on primary healthcare professionals, who currently handle 85% of diagnoses in the country. It supports both initial and continuing training, provides scholarships for nearly 500 students in midwifery, nursing and laboratory sciences, and equips the University of Rwanda.



48%
OF 2024
COMMITMENTS
included
support for the
development of
human resources
for health

Rwanda.
In a village in
Karongi District,
a community
health worker
raises awareness
on pandemic
prevention.

Addressing staff shortages

In Chad, where there is a severe shortage of health workers and significant regional disparities, a €7 million program is being deployed across four priority regions. It aims to sustainably improve the quality of training for paramedical staff, modernize HR management, and introduce new specialties (anesthesia, pediatrics, gynecology). Gender is fully integrated: curricula now include gender-related challenges, modules on gender-based violence and counseling systems. The objective is to train a new generation of professionals who are more equitably distributed and closer to local needs.

Improving hospital emergency services

In Guinea, L'Initiative is investing €5 million to overhaul hospital emergency departments, a key link in the pandemic response chain. Two university diplomas in emergency medicine

and nursing have been created, supported by a continuing education plan. Traditional practitioners are also being trained to identify emergencies early, while referral systems are being strengthened. These actions help build a more responsive, fairer and crisis-resilient care system.

Training the next generation of public health leaders

L'Initiative is also investing in high-level training for public health leaders in West and Central Africa. In Lomé, €2.7 million have funded the creation of a regional master's program in field epidemiology in partnership with the University of Bordeaux (ADERA). Thirty students from ten countries began the two-year course in October 2024, which includes practical placements. Additionally, €55,000 in support to the institute of public health, epidemiology and development (Isped) is allowing ten young health professionals to pursue a university diploma in Bordeaux, with annual excellence scholarships. ●



Find out more about
our commitments
for human
resources for health
on our website.

2024, record commitments, visible progress



Find out more
about our results
on our website.

In 2024, with €115 million committed –a 20% increase compared to 2023– L'Initiative confirmed its growth trajectory. It demonstrated its capacity to intervene in a targeted, strategic and systemic way in partner countries, including the most fragile contexts. This scale-up has yielded tangible, measurable results aligned with long-term health system strengthening priorities. These efforts are consistent with the strategic vision of the Global Fund to Fight AIDS, Tuberculosis and Malaria.



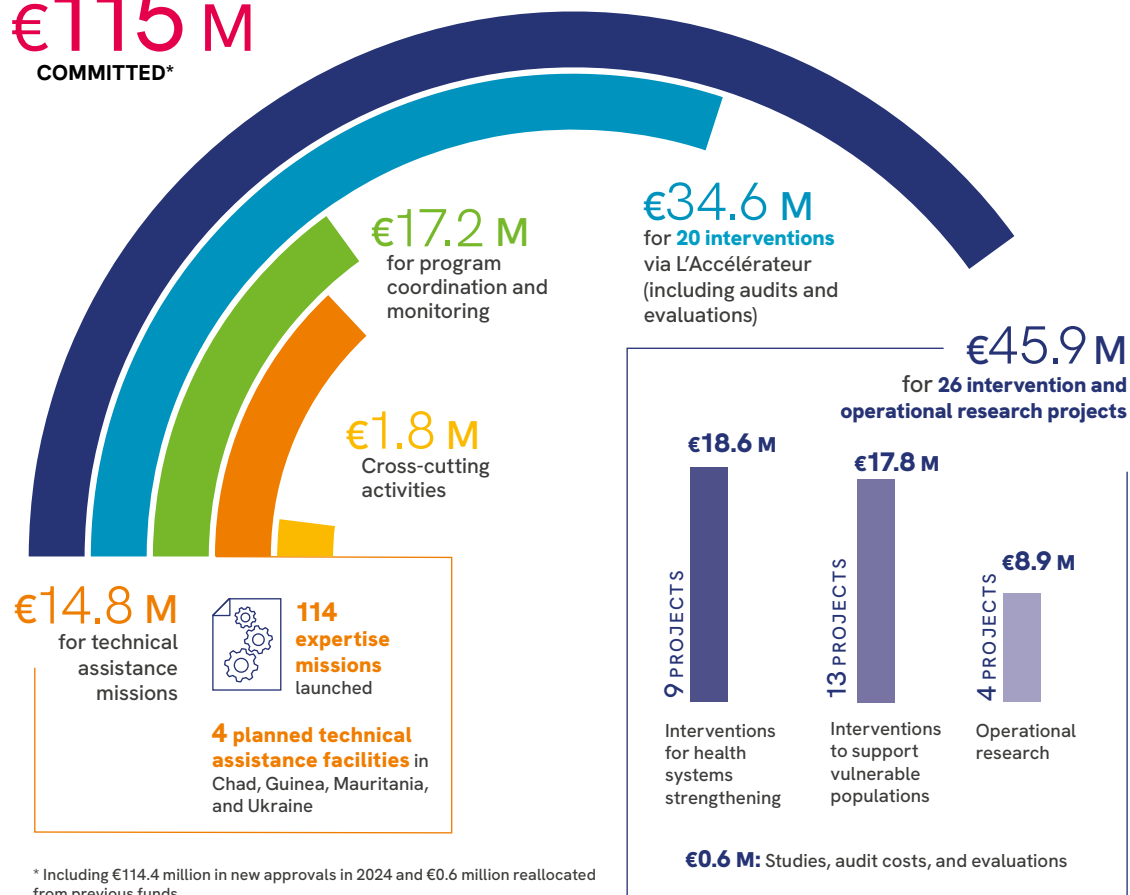
ANTOINE PEIGNEY,

Health Department Director, Expertise France

“Strengthening and expanding support in the most vulnerable countries is our top priority. That’s where needs are most urgent—and where our work can truly change lives. L’Initiative operates with pragmatism and commitment to ensure every action matters, especially for the most vulnerable women, men and children. It also demonstrates our capacity to respond swiftly to new and persistent crises.”

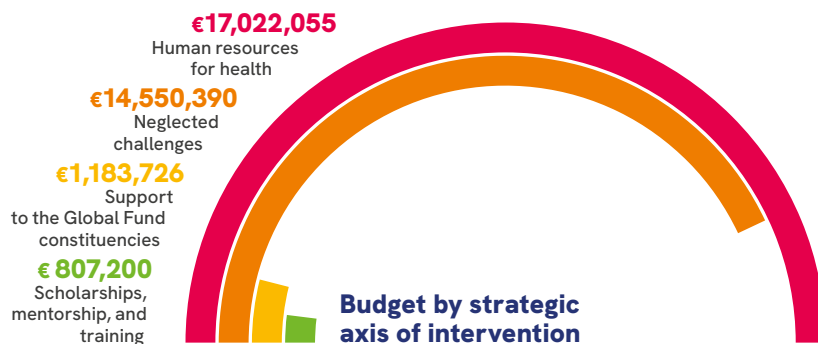
A YEAR OF UNPRECEDENTED ENGAGEMENT

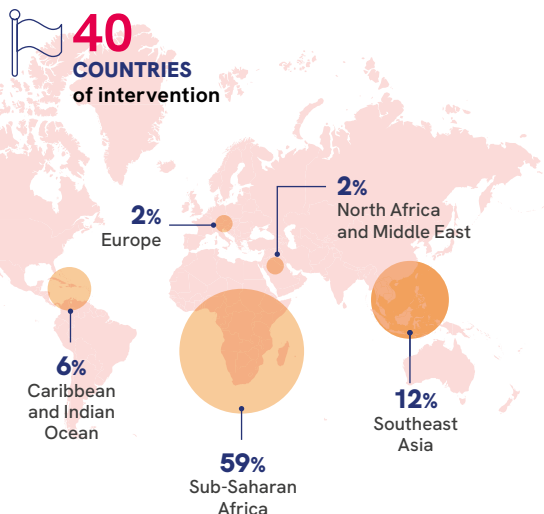
€115 M
COMMITTED*



L'ACCÉLÉRATEUR - RESPONDING TO NEGLECTED CHALLENGES

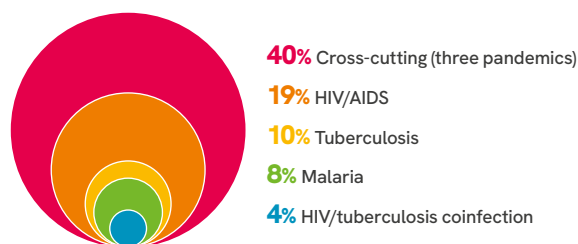
With a **€34.6 million** budget (including evaluations and audits), L'Accélérateur is a key instrument to address neglected challenges in the fight against pandemics and in strengthening health systems—such as malaria, pediatric health, triple elimination, and cancers linked to HIV/HPV. Its adaptability and focus on human resources for health enable it to respond to long-term structural issues, including the shortage of qualified health professionals.



COMMITMENTS
BY REGION

Sub-Saharan Africa accounted for **59% of the budget**, in line with intervention priorities in countries that are most lagging behind in the fight against pandemics.

COMMITMENTS BY PANDEMIC



40% of the total committed budget was allocated to cross-cutting interventions or health systems strengthening—reflecting a more systemic approach.

Strategic focus on least developed countries

73% of the 2024 budget was allocated to 25 of the least developed countries, significantly exceeding the 50% target set by the CICID. Five countries with high levels of vulnerability—Chad, Guinea, Madagascar, DRC, and Senegal—received more than one-third of the technical assistance commitments. 42% of project funding was concentrated in five countries with systemic fragilities: Cameroon, Chad, Guinea, Madagascar, and Rwanda.

2024 FINANCIAL OVERVIEW

	2024
Expertise Channel (including planned technical assistance facilities)	€9,598,000
Project Channel (Vulnerable populations, Strengthening health systems)	€20,642,000
Projects (Operational research)	€3,720,000
L'Accélérateur	€9,144,000
Audits and evaluations	€806,000
Cross-cutting expenses	€867,000
Communications	€512,000
Monitoring, evaluation, accountability and learning	€227,000
Dedicated team	€4,731,000
Sub-total	€50,247,000
Management costs	€5,425,000
TOTAL	€55,672,000

This financial report reflects the amounts actually spent during the 2024 fiscal year. It differs from commitments, which correspond to funding decisions approved by L'Initiative's Steering Committee and may be implemented over several years.

STRATEGIC SUPPORT TO FUNDING ACCESS

L'Initiative is fulfilling its mandate by supporting **37 countries** in preparing their funding requests for the Global Fund's seventh funding cycle (GC7) for 2023-2025. The objective: to enable the most vulnerable countries to submit strong, well-structured proposals.



68

TECHNICAL ASSISTANCE MISSIONS
launched between summer 2022
and the end of 2023.

Timely and targeted technical expertise, tailored to each country's specific challenges



€14.8 M
INVESTED



11,766
MISSION DAYS



353
EXPERTS mobilized

A remarkable leverage effect on mobilized fundings



€4.2 bn
in grants mobilized



EVERY €1 INVESTED
in technical assistance mobilizes
an average €330 in grants.



97%
of supported requests approved on first
review by the Technical Review Panel :
**an exceptional level of approval by the
Global Fund**

IMPROVING PERFORMANCE INDICATORS



“

LAETITIA DREAN,
Head of the Monitoring,
Evaluation, Accountability
and Learning Unit,
L'Initiative

In 2024, there is a notable increase in scale—with a greater number of beneficiaries and supported organizations—as well as qualitative progress. The supported projects helped improve access to care for the most vulnerable, while enhancing the skills of local actors working closely with communities and service providers. These indicators are not just reporting tools—they serve as strategic management instruments, capturing not only figures but also the deeper transformations driven by our fieldwork.



474,868

PEOPLE received health and social services in 2024 through projects supported by L'Initiative –2.3 times more than in 2022



330,617

PEOPLE made aware of their health-related rights



1,767

HEALTH STRUCTURES SUPPORTED directly or indirectly in project implementation



7,964

HEALTH WORKERS with strengthened professional skills



78

STRATEGIC OR NORMATIVE DOCUMENTS developed or supported

In 2024, strategic conferences and events were held in Southeast Asia, Africa, and Europe. These gatherings always offer a valuable opportunity to share results achieved in the field and to showcase approaches that have proven effective among the most vulnerable populations. They foster greater synergy among stakeholders engaged in the fight against pandemics and open up new perspectives for strengthening local capacities, improving access to care, and developing context-specific solutions.

MAJOR EVENTS

Building A COLLECTIVE RESPONSE to global health challenges



ADELINE LAUTISSIER,
Head of the Southeast Asia and
Ukraine Unit, L'Initiative

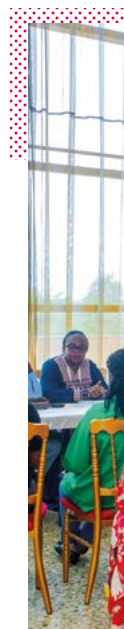
In the face of today's health challenges, regional cooperation is essential to accelerate the fight against pandemics. In June 2024, L'Initiative brought together all of its partners in Southeast Asia for the first time to discuss the specific challenges facing countries in the region, highlight successful interventions, and strengthen regional cooperation. In this subregion, the response to pandemics is driven by strong synergy across stakeholders and borders.

**SOUTHEAST ASIA
REGIONAL MEETING - BANGKOK,
JUNE 10-11, 2024**

Strengthening regional capacity

The Southeast Asia Regional Meeting was designed as a space for regional dialogue—an opportunity to reflect on the results of projects supported by L'Initiative, analyze the challenges encountered, and foster stronger links among stakeholders. Government officials, NGOs, researchers, project managers, field experts, and technical and financial partners came together to share knowledge, identify ways to improve, and strengthen coordination across initiatives and approaches.

This regional dialogue echoes L'Initiative's investment—alongside the Global Fund—in the Greater Mekong region. Despite notable progress, the subregion continues to face major challenges. Over the past 10 years, L'Initiative has invested more than €50 million in 37 projects, supporting initiatives led by national programs, civil society, universities, and research centers—both in the fight against the three pandemics and in strengthening health systems.



**AFRAVIH 2024 – YAOUNDÉ,
APRIL 16-19, 2024**

Collective mobilization for integrated approaches

L'Initiative played an active role in the 2024 international conference of the Francophone Alliance of Health Actors Against HIV (AFRAVIH), held in Yaoundé in 2024. Activities included: co-hosting the Équipe France stand with the French Ministry for Europe and Foreign Affairs, the French Development Agency, Expertise France, and ANRS MIE; organizing the symposium “HIV and Comorbidities: Towards Multipurpose Health Services”; and supporting the SUCCESS program’s session on secondary cervical cancer prevention—an event that also marked the launch of Phase II in six new countries.

These events were an opportunity to highlight the importance of integrated approaches for the comprehensive management of HIV and its comorbidities, and to mainstream sexual and reproductive health into public health policy. L'Initiative also organized two roundtables on advanced HIV and community-based screening, reinforcing its advocacy for more equitable, cross-cutting, and people-centered responses.



Cameroon.
L'Initiative played an active role in the AFRAVIH conference.



Thailand.
In June 2024, L'Initiative brought together all of its Southeast Asian partners for the Regional Meeting.

**AIDS2024 – MUNICH,
JULY 22-26, 2024**

Promoting sexual and reproductive health and rights in the HIV response

In July 2024, 15,000 people gathered at the AIDS2024 conference in Munich. Co-funded by L'Initiative, the France stand-opened by Anne-Claire Amprou, French Ambassador for Global Health—hosted a key roundtable on sexual and reproductive health and rights.

Moderated by Éric Fleutelot, Technical Director of the Major Pandemics Unit at Expertise France, the discussion focused on the challenges faced by people living with HIV, sex workers, and persons with disabilities. The event underscored the need for intersectoral collaboration and the integration of rights into public health strategies. The SUCCESS program also held the session “Women at the Center,” which highlighted the integration of cervical cancer prevention into the HIV response and showcased innovative, inclusive solutions.



Find out more about our major events on our website.

In humanitarian crisis settings, L'Initiative responds swiftly and flexibly to support health actors and maintain access to essential services. Its response efforts target the most vulnerable populations, who are often disproportionately exposed and discriminated against in deteriorating contexts. To address long-term issues, L'Initiative works to strengthen the resilience of health systems affected by crises. With tailored interventions and targeted expertise, it helps sustain projects on the field while improving prevention, preparedness and response capacities.

INTERVENTIONS IN TIMES OF CRISIS

FROM EMERGENCY TO RESILIENCE in the support to health systems



ARTHUR LANGLOIS,
Project Officer, L'Initiative

When crisis contexts weaken access to care, L'Initiative acts to ensure that the most vulnerable populations can still access quality health services. In Ukraine, the conflict is worsening the situation for people living with HIV, LGBTQIA+ communities, prisoners and people who use drugs—particularly women. Very few initiatives target them, even though they are among those hardest hit by the war. L'Initiative is mobilized alongside its Ukrainian partners to support all those affected.

Maintaining access to care even in times of crisis

Defending the right to health where it is most threatened remains a core priority for L'Initiative. A vital contribution, as illustrated by Oleksandra Denysenko. Since November 2023, her organization, TBPeopleUkraine, has received support from the emergency fund deployed by L'Initiative since 2022. As is often the case, war fuels the resurgence of epidemics and obstructs access to care. With €5 million in resources, this fund finances five civil society projects in Ukraine. Two additional catalytic initiatives are supported through calls for proposals. Despite the ongoing conflict, six technical assistance missions are under way in support of national health authorities. The challenge: ensuring continuity in the care pathway—from testing and treatment to follow-up—amid severe disruption.

L'Initiative is also active in Ethiopia, where multiple overlapping crises (conflicts, disease outbreaks, natural disasters) have severely undermined the health system. HIV prevalence has risen, and malaria cases have doubled between 2023 and 2024. To help reduce mortality and morbidity, L'Initiative is supporting innovative projects to improve diagnostics and expand access to care in remote areas.



84,000+

MIGRANTS

covered by
the M-Fund in
Thailand, 64% of
whom are women

Reaching the most vulnerable, defending fundamental rights

L'Initiative is committed to improving access to care for vulnerable populations wherever it operates. In Thailand for instance, it supports the M-Fund—a low-cost health insurance scheme that currently covers more than 84,000 people—to improve healthcare access for Burmese refugees along the border. In the same region, more than 100 community health workers have been trained through a project led by the SMRU with support from L'Initiative.

In line with the values of France and the Global Fund, L'Initiative promotes equitable, inclusive and stigma-free health services. In Lebanon, the armed conflict that broke out at the end of 2024, compounded by ongoing economic, social and political crises, has further exacerbated vulnerabilities. An estimated 12% of men who have sex with men live with HIV. In response, L'Initiative supports the work of SIDC and the Marsa Sexual Health Center to decentralize services and improve access to sexual and reproductive health, while raising awareness among both communities and the wider public about these human rights issues.

In Ukraine, where warfare and trauma have led to an increase in drug use, L'Initiative supports community-based responses and contributes to shaping national policies to address these major challenges. It pays particular attention to initiatives focused on women, who face compounded vulnerabilities such as gender-based violence and increased economic insecurity.



Ukraine.
The CoMPSS
project team
supports women
who use drugs
by helping them
access opioid
substitution
therapy.

Anticipating epidemics, strengthening health security

In such contexts, L'Initiative also prioritizes strengthening health systems. One key objective is to improve epidemic preparedness and prevent outbreaks from affecting already vulnerable populations. In Rwanda, L'Initiative supported the country's response to an outbreak of Marburg virus disease. A 50-day international technical assistance mission was deployed, through a One Health approach, to reinforce national capacities for prevention and response—not only for Marburg but for other emerging infectious diseases as well. This hemorrhagic fever, which is highly lethal, primarily affected healthcare workers in Rwanda. Thanks to rapid mobilization, the epidemic was contained within three months and officially declared over in November 2024, with the lowest recorded case fatality rate of any Marburg outbreak in Africa to date. ●



Find out more
about our
interventions in
times of crisis on
our website.

In 2024, L'Initiative stepped up its support to civil society organizations, focusing on their structuring, legitimacy, and influence. It backs their efforts to play a meaningful role in decision-making processes—particularly within the Country Coordinating Mechanisms of the Global Fund. Through this engagement, L'Initiative promotes a more inclusive, equitable, and effective health governance, where civil society is fully integrated and recognized.

ORGANIZATIONS AND COMMUNITIES

CIVIL SOCIETY, driver of social and health transformation



SABRINA RÉGENT,
Project Officer,
L'Initiative

In Cameroon, civil society organizations (CSOs) are an essential link in epidemic response. They are key partners of the State in both prevention and the continuum of care. CSOs often step in where formal health systems cannot reach, building trust with the most marginalized and vulnerable communities. They also raise the voices of those communities through advocacy aimed at influencing public policy in order to change the legal framework.

CSOs play a vital role in voicing community needs, defending rights, and strengthening health systems. To support their work, L'Initiative launched SOFIA, a tailored support mechanism that offers technical, financial, and strategic assistance to reinforce legitimacy, boost operational capacity, and amplify advocacy. Backed by €6 million, SOFIA is adapted to each organization's context and priorities.

Strengthening their capacity to act

Although the CSOs supported by L'Initiative operate in diverse environments, they share a common goal: defending the rights and health of marginalized populations. In 2024, 11 new CSOs were selected for their work in Central African Republic, Chad, Gabon, and Congo. L'Initiative provides 15 months of renewable support. It is tailored to strengthen local actors' autonomy, reinforce their advocacy capacities, and better integrate gender and human rights into their interventions.

Since 2023, 20 organizations from eight French-speaking African countries have joined the program. Through SOFIA,

L'Initiative reaffirms its commitment to supporting local stakeholders so they can make their voices heard and shape more inclusive governance. This also reflects a strong recognition of the central role communities play in pandemic responses.

A coordinated support at country-level

To increase the impact of its support, L'Initiative works with several CSOs within the same country to build collective dynamics, foster knowledge sharing, and anchor their actions in national systems. This approach ensures a coordinated response tailored to each organization's specific needs.

In Cameroon, L'Initiative conducted an in-depth organizational assessment of eight CSOs involved in HIV response, human rights advocacy, community health, and support to key populations. In 2024, each organization benefited from an individualized capacity-building plan-based on its assessment-, developed in close collaboration with their teams to ensure their commitment to the transformation and their ownership of changes suggested.

The aim is to support each organization in developing its own strategy, aligned with its priorities, mission, internal capacities, and operating environment. This approach has also been implemented in other partner countries, proof of a continuous effort to adapt to local realities.

Equipping community advocacy

Country Coordinating Mechanisms (CCMs) play a central role in the Global Fund's

governance model. Yet, communities often struggle to gain meaningful access to them – their role remains symbolic or limited to consultation. This is one of the findings of the RISE study (Representation, Inclusion, Sustainability, and Equity), co-funded by L'Initiative and conducted by Coalition Plus in 2023.

To help communities better access and engage in the CCMs, L'Initiative works hands down with CSOs to advocate for a better quality of representation, capacity building, and clearer political support. It supports, for example, the Riposte 2 project led by REVS PLUS in Burkina Faso, Burundi, and Mauritius. The project trains community leaders to gain access to policymaking spaces and national programs, ensuring that pandemic responses align with the real needs of affected communities. It builds on the achievements of Riposte 1, which reached 1,815 people across 106 CSOs. ●



Togo.
Capacity-
building session
for members of
a civil society
organization.



Find out more
about our work
with CSOs on our
website.

VALUES AND PRINCIPLES



Côte d'Ivoire.

Yolande Guiribo, a community health worker in San-Pédro, travels to rural areas to provide HPV screening as part of the SUCCESS program.



112
COMMUNITY ORGANIZATIONS
supported in the implementation of funded projects



CATY FALL SOW,
Head of the Africa
and Middle East
Department, The
Global Fund

A shared foundation of respect for and **PROMOTION OF HUMAN RIGHTS**

L’Initiative places tangible, lasting impact for populations most exposed to pandemics at the core of its action. It operates with a constant commitment to social justice and effectiveness in contexts where health systems are most fragile, access to care most unequal, and voices of affected populations least heard. All supported actions are grounded in a shared foundation of respect for and promotion of human rights, with a fully integrated gender perspective.

Putting beneficiaries at the center

Each intervention—whether a multi-year project or technical assistance—is designed to meet needs expressed by local stakeholders, building on their experience and skills, priorities, and realities. This partnership-based

approach, which puts beneficiaries at the center, is what makes L’Initiative’s model strong and distinctive.

L’Initiative’s efficiency is not measured solely through short-term indicators on the duration of a funding cycle. It is also reflected in the ability to transform practices on the long run, strengthen existing systems, and build responses that are more equitable, resilient, and people-centered.

Acting for long-term impact while remaining true to the principles and values shared with experts, partners, and of course with the Équipe France and the Global Fund—this is the course L’Initiative strives to maintain alongside the countries, organizations, and individuals it supports. ●

L'Initiative works to remove obstacles to health and human rights by placing inclusion, equality, and social justice at the core of its actions. Its actions primarily target the most vulnerable populations: sex workers, LGBTQIA+ individuals, people who use drugs, and those exposed to gender-based violence. To ensure the effectiveness and sustainability of its support, L'Initiative addresses social, legal, and cultural barriers to accessing care. It actively promotes community participation and systematically integrates gender and sexual and reproductive rights perspectives into all of its projects.

HUMAN RIGHTS

at the heart of strategies to fight pandemics



JOSÉ BOFF,
Head of the Guinea Gulf
and MENA Region Unit,
L'Initiative

In response to the anti-woubi crisis in Côte d'Ivoire, L'Initiative continues its work. We have long been engaged in training legal professionals and raising community awareness on rights. Our goal is to better protect the most exposed populations. This crisis underscores the deep-rooted discrimination faced by targeted populations and poses a serious threat to their health. Through our actions, we are committed to breaking down these barriers and advancing social and health justice.

HUMAN RIGHTS

€146 m against gender inequalities between 2020 and 2024

Sex workers

L'Initiative empowers sex workers to take control of their health and rights. In Côte d'Ivoire, through the POUVOIR project led by Solthis, over 4,700 sex workers received awareness training, 29 peer educators were trained, and 644 consultations were conducted.

Protecting fundamental rights

In partnership with UNAIDS, L'Initiative took action in Côte d'Ivoire in response to the anti-woubi crisis, which jeopardizes the fight against HIV. The REVU-Trans project was scaled up: 71 transgender people received legal assistance, emergency shelter, and access to healthcare.

Advancing LGBTQIA+ rights

L'Initiative acts to break down social barriers and promote open dialogue. It supported Coalition PLUS in organizing an anti-homophobia workshop. The event brought together civil society actors, government representatives, and LGBTQIA+ community members to discuss human rights and public health.



76%
**OF SUPPORTED
PROJECTS**
in 2024 integrate
a gender-sensitive
approach

Côte d'Ivoire.
The Ya-Fohi project
strengthens harm
reduction strategies
targeting people
who use drugs, a
population highly
vulnerable to HIV
and tuberculosis.

ADVOCACY

GENDER AND HEALTH

Training community leaders across 23 African countries

L'Initiative believes in the crucial role of communities in the pandemic response and the importance of advocacy in raising grassroots needs to decision-making platforms. In partnership with L'Atelier des Luites, Coalition PLUS, and Sidaction, "La Fabrique des Dialogues" seeks to professionalize advocacy efforts and support the emergence of new community leaders across West and Central Africa and the Indian Ocean.

Four training centers were established in Burundi, Cameroon, Côte d'Ivoire, and Mauritius to build community advocacy capacity and equip leaders. The goal: to influence public health and access to care policies.

75 projects addressed gender inequality between 2020 and 2024

Gender-sensitive approach

Gender inequalities often compound other forms of discrimination. In line with the Global Fund's 2023–2028 strategy, L'Initiative supports projects like PluriElles, which expands access to community-based sexual and reproductive health services in Madagascar.

Combating stigma

Women and girls are particularly vulnerable to HIV. In 2023, 210,000 women over 15 were living with HIV. Yet, mental health is rarely included in their care. In Ghana, L'Initiative supports BasicNeeds-Ghana's efforts to improve access to healthcare for girls and women living with mental health conditions (depression, violence, post-partum). The project promotes comprehensive and tailored follow-up by integrating psychological support into maternal and sexual health services.



Find out more
about human
rights on our
website.

Children and adolescents are too often overlooked in pandemic responses, despite being particularly vulnerable. Diagnosis is often delayed, their specific needs are insufficiently addressed, and continuity of care is inconsistent. To tackle this, L'Initiative has made pediatric health a priority in its response. It supports the development of age-specific approaches rooted in local contexts and realities to overcome barriers and co-develop practical solutions with professionals, communities, and young people themselves.

Leaving NO CHILD OR ADOLESCENT behind in the response



VERONICA NOSEDA,
Head of the Operational
Research and Science Unit,
L'Initiative

For too long, children have been neglected in the fight against pandemics, even though they pay a heavy price: more than half of all children born with HIV die before the age of 2 without proper therapy, tuberculosis kills 200,000 children annually, and malaria remains the leading cause of death among children under 5 in many sub-Saharan African countries. At L'Initiative, pediatric response is a top priority. We invest in operational research to ensure that children and adolescents are no longer left out of the fight.

HIV/AIDS

Improving pediatric care and training health workers

Ensuring a successful transition

Active in 12 francophone African countries, the “Enfants et VIH en Afrique” (EVA) network brings together pediatric HIV care centers. With support from L'Initiative, EVA implemented the Transitions program, which helps young people living with HIV move from pediatric to adult care. This pioneering approach focuses on comprehensive support tailored to young people's lived experiences, with special emphasis on health worker training, mental health, and community integration.

Providing tools to frontline workers

Advanced HIV disease accounts for more than half of AIDS-related deaths. Children under 5 are systematically classified as having advanced HIV are particularly exposed. To address this urgent issue and improve care quality, L'Initiative developed a practical toolkit for clinicians, frontline health workers, and trainers.



€6.2 M
COMMITTED

in favor of
children's
health, through
three projects
of operational
research
in 2024

TUBERCULOSIS

Improving the diagnosis and care of children with tuberculosis

Enhancing detection and support

In Cameroon, 43% of children with tuberculosis go undiagnosed. L'Initiative funds the TB_PEC@2.0 project, implemented by the NGO For Impacts in Social Health (FIS), to strengthen diagnosis and care for vulnerable children, especially internally displaced children in urban areas. The project deploys a model based on active case finding, coverage of catastrophic expenditure, and community integration. The project targets children aged 0–14 in 35 health centers across Yaoundé. Ultimately, it aims to screen 515 child contacts and initiate treatment for 857 children (either preventive or curative). The approach relies on coordination between health workers, community agents, and hospital teams to reduce diagnostic delays and improve adherence, in close collaboration with the National Tuberculosis Program.

Driving innovation in pediatric tuberculosis

L'Initiative also supports digital approaches. In Côte d'Ivoire and Mozambique, the eHealth4ChildTB project combines artificial intelligence and telemedicine to improve implementation of WHO guidelines on pediatric TB. The project supports clinical decision-making and remote follow-up, particularly in areas with limited healthcare personnel.

MALARIA

Innovating to better protect children

Testing a new vaccine strategy against malaria

Starting in 2025, Epicentre will lead the INTEGREVAC project in Chad with support from L'Initiative. This 36-month study will assess the integration of the R21/Matrix-M malaria vaccine into the seasonal malaria chemoprevention (SMC) campaign targeting children under 5. The aim: to evaluate the feasibility, acceptability, and cost-effectiveness of delivering the vaccine through community health workers during the rainy season, and compare it to the standard immunization schedule delivered by the Expanded Program on Immunization (EPI). The project seeks to generate robust data to inform malaria vaccination policy in areas with seasonal transmission and to strengthen local capacities in health economics and qualitative research.

Mozambique.
L'Initiative is actively engaged in reducing the burden of the three pandemics and improving access to care for children.



Find out
more about
pediatrics and
pandemics on
our website.

People who use drugs are often criminalized and stigmatized, making them some of the most excluded from health systems. Yet they are among the most vulnerable to HIV, hepatitis C, tuberculosis, and mental health disorders. L'Initiative supports the integration of harm reduction into national health policies – including access to prevention, medical care, and psychosocial support. By working directly with affected communities, it also contributes to shifting public perceptions and upholding fundamental rights.

Integrating HARM REDUCTION into national health systems



MARIE VICART,
Project Manager,
L'Initiative

In Rwanda, despite major wins against HIV in the recent years, people who use drugs remain highly vulnerable to the virus. We support projects that inform them about their rights and harm reduction, improve their access to care, and raise awareness among both health professionals and law enforcement. These efforts reflect our commitment to ensuring health access for all and eliminating HIV. We believe in a harm reduction approach rooted in public health, human rights, and the empowerment of affected communities.

PUBLIC HEALTH POLICIES

Changing politics, changing perceptions

Local ownership and institutional recognition

Since 2014, L'Initiative has supported harm reduction efforts in Côte d'Ivoire targeting people who use drugs. Initially led by Médecins du Monde, these efforts are now implemented by the Ivorian NGO Espace Confiance through the Ya-Fohi project, launched in 2024. This handover represents a major step toward local ownership. The project includes strengthening community-based services, providing legal assistance, integrating mental health support, advocating for drug law reform, and delivering comprehensive care. Among its beneficiaries, the HIV prevalence rate dropped from 9.8% to 2%—a tangible sign of the impact of this holistic approach.

Breaking taboos

In 2024, L'Initiative financed the Asia-Pacific Chemsex Symposium under the theme “Pleasures, Politics, Possibilities.” It thus contributes to highlight long-neglected issues and promotion of risk reduction policies through knowledge sharing and open dialogue.



21

**ONGOING
PROJECTS**

in 2024 targeting
particularly
people who use
drugs

Rwanda.

The Tubiteho project advocates for the introduction of harm reduction services for people who use drugs.

Holistic approach

Until 2023, no harm reduction services existed in Rwanda. In response, L'Initiative supports the Tubiteho project, led by a consortium of local organizations with backing from Médecins du Monde. The project aims to sustainably integrate harm reduction services into the national health system, offering a comprehensive approach that includes prevention, care, and psychosocial support. It also promotes legal reform and challenges stigma. Another goal is to place the rights of people who use drugs at the core of public policies. In parallel, L'Initiative is supporting the Rwandan government in developing its national strategy for opioid agonist therapy (OAT), including methadone-based treatment, to help people who use drugs stabilize their consumption and reduce overdose risk.

REGIONAL COMMUNITY-LED RESPONSES

21% of harm reduction interventions take place in Africa

Anticipating rising drug use

By 2030, drug use in West Africa could rise by 45% according to Médecins du Monde. To anticipate this trend, L'Initiative launched a regional program in 2024 in Benin and Togo, building on lessons learned in Côte d'Ivoire. The program combines prevention, access to care, and community empowerment, with particular attention to the needs of women who use drugs—a population often excluded from existing services.



Find out more about harm reduction projects on our website.

CHALLENGES AND OUTLOOKS



Thailand.
The M-Fund project, supported by L'Initiative, provides thousands of Burmese migrants with access to low-cost health insurance.



64
PROJECTS
ENGAGED
in 2024 in
29 countries,
for €79.1 M



ÉRIC FLEUTELLOT,

Technical Director,
Major Pandemics
Unit, Health
department,
Expertise France

A SOLID MODEL, a committed ecosystem

The year 2024 ended with results that reflect the solidity of L'Initiative's model: a dual approach combining bilateral et multilateral support, as well as human expertise and catalytic funding. These achievements are a testament to the excellence of our partners, our team, and all those engaged in this shared ecosystem.

As times grow more uncertain and complex, we must build on the progress made to turn it into success. Progress is not an end in itself—it is a means. It becomes meaningful only when anchored in equity, sustainability, and political action. Reducing case numbers does not mean eradication. Innovation does not automatically ensure access. Without social justice, scientific evidence, and sustained commitment, progress remains incomplete. These are milestones to celebrate—and to learn from—and this pursuit of learning is constant at L'Initiative.

Turning progress into success

2024 was also a turning point. The world faces an increasingly volatile geopolitical context, marked by major crises that remind

us of our collective vulnerability and of how quickly past gains can be undone. L'Initiative continues to stand firm as a platform for commitment – firmly rooted in values such as human rights, gender equality, and scientific rigor. It seeks to turn recent progress into lasting successes. Our partners, mobilized experts, and dedicated teams—in Bangkok, Conakry, Kigali, NDjamena, Nouakchott, and Paris—all work toward the same goal: delivering quality without compromise, preserving and sharing knowledge, and promoting a human-centered approach grounded in integrity and humility. This mindset, in line with that of Expertise France, is the foundation of sustainable, genuinely transformative actions—including in support of those who are too often neglected. ●



Find out more
on L'Initiative's
commitments
on our website.

Climate change and environmental degradation are altering the dynamics of infectious diseases – expanding transmission zones, increasing resistance, disrupting access to care, and weakening health systems. L'Initiative supports innovation and the implementation of context-adapted solutions. It funds operational research, training and knowledge sharing, and the development of surveillance systems that incorporate climate data.

Health response to CLIMATE CHANGE



ISABEL HOTTEART,
Partnerships and Strategy
Coordinator,
L'Initiative

“Adopting a “One Health” approach means recognizing that human health is closely tied to these of animals, plants, and the environment around us. In its strategy for global health, France seeks to better prepare and respond to public health emergencies and the consequences of climate change through this approach. In this context, and facing these challenges, ensuring continuity of care is a key priority for L'Initiative.”

Responding to emerging malaria challenges

Innovating to reduce transmission

In Senegal, malaria cases surged between 2019 and 2021. In response, L'Initiative supports the AMARETi project, which targets asymptomatic forms of the disease. The Plasmodium parasite is responsible for sustaining malaria during the dry season and serves as a key reservoir that reignites transmission with the return of the rains. The project combines mass drug administration campaigns with targeted outreach to high-risk groups—particularly adolescents and individuals with limited access to health services. AMARETi could help reduce seasonal transmission and lower mortality.

Prevent to protect

The increasing resistance of mosquitoes to insecticides makes innovation in prevention tools urgent. In Côte d'Ivoire, the Swiss Centre for Scientific Research developed TrapNet—a device that attaches to any mosquito net and is estimated 4.5 times more effective than a standard net. Its effectiveness will be evaluated using epidemiological, entomological, and socio-anthropological indicators of acceptability.



19 FRENCH- SPEAKING COUNTRIES

mobilised in
Musanze (Rwanda)
to anticipate the
impact of climate
change on malaria.



Rwanda.

From December 2-6, 2024,
L'Initiative and INES-Ruhengeri
co-organized a training course in
Musanze on the impact of climate
change on malaria.

Integrated approach and climate justice

Engaging civil society

L'Initiative has long supported the APCASO network, which in 2024 enabled community representatives to participate in a health-climate workshop organized by the French Embassy in Bangkok. A climate justice advocacy group was formed during the event, which published a position paper titled “Climate Justice: Overdue but Not Impossible.”

“One Health” trainings

In partnership with the French Agricultural Research Center for International Development (CIRAD), L'Initiative offers “One Health” training to networks of stakeholders networks engaged in The Global Fund. These sessions help strengthen local capacities and promote community ownership and implementation of the approach in the field.

Generating and sharing knowledge

Building collective response to health-climate challenges

Recognizing that climate change is shifting the behavior of infectious diseases, L'Initiative promotes knowledge sharing. In December 2024, it organized a training session in Rwanda for representatives of national malaria programs from 19 francophone African countries. The objective was to strengthen surveillance capacities and foster South-South collaboration.

Reinforcing molecular surveillance of malaria

Djibouti was on the way of eliminating malaria in the 2000s. The country has faced a resurgence over the past decade fueled by the arrival of the *Anopheles stephensi*. To better understand growing treatment resistance, L'Initiative supported a Plasmodium genome sequencing study. The findings, published in a scientific journal, contributed to the knowledge base on emerging strains and resistance patterns.



Find out more on
the ties between
health, climate and
infectious diseases
on our website.

Breaking taboos and promoting sexual and reproductive health and rights are central to L'Initiative's commitments. The projects it supports strengthen prevention, screening, and access to care through integrated approaches. Particular emphasis is placed on the prevention of mother-to-child transmission of infections, as well as on cervical cancer screening and treatment. By backing innovative initiatives rooted in local realities, L'Initiative contributes to strengthening health systems and promoting fairer, more inclusive care pathways for those most at risk.

Ensuring equitable access to SEXUAL AND REPRODUCTIVE HEALTH AND RIGHTS

Acting for the elimination of mother-to-child transmission of HIV, syphilis, and hepatitis B

Eliminating transmission

In sub-Saharan Africa, mother-to-child transmission of HIV, hepatitis B, and syphilis remains a major public health challenge, mostly because of limited access to prenatal screening. Aligned with the WHO's global objective of triple elimination, L'Initiative supports the TRI-MOM project in The Gambia, led by the French National Research Institute for Sustainable Development (IRD). This project integrates systematic screening into maternal health services. In 2024, 550 pregnant women were tested and received continuous care throughout their pregnancy. TRI-MOM also works to combat obstetric violence to ensure dignified and equitable maternal care.

Expanding cervical cancer prevention

Embedding screening in public health policy

L'Initiative actively supports cervical cancer and care in French-speaking Africa through the SUCCESS program (Scale-Up of Cervical Cancer Elimination with Secondary prevention Strategy), co-funded with Unitaid. The program bolsters national strategies across four countries, focusing on multiple levels: health facility equipment, healthcare worker training, laboratory capacity, and sample management systems. SUCCESS builds on strong partnerships with local communities and aims to embed cervical cancer screening into public health policy—especially for women living with HIV, who are at greater risk yet remain largely underscreened.



11

PROJECTS
for cervical
cancer prevention
implemented
since 2022
in 10 countries



Côte d'Ivoire.

As part of the SUCCESS program, community health workers raise awareness of cervical cancer prevention.



YOLANDE DA SILVA,
Project Officer,
L'Initiative

Cervical cancer is preventable with strong commitment at every level. Primary prevention relies on vaccinating from the age of 11 against the human papillomavirus—the virus responsible for over 95% of cervical cancer cases. Secondary prevention focuses on expanding HPV screening and treatment of precancerous lesions. At L'Initiative, our goal is clear: to ensure that every woman has access to the medical resources needed for diagnosis and treatment. This is especially critical for women living with HIV, who are six times more likely to develop the disease if infected with HPV. Inequalities in access to care and prevention can no longer be overlooked.

HPV-DNA screening integration

L'Initiative promotes the systematic integration of HPV-DNA screening and treatment of the human papillomavirus (HPV) in HIV programs. Recommended by WHO, this screening allows for earlier and more accurate detection, yet remains difficult to access in many countries. In Cambodia, L'Initiative is

working with the National Center for HIV/AIDS, Dermatology, and STIs (NCHADS) to change that. A standardized HPV-DNA screening procedure has been introduced in HIV clinics to ensure women who test positive for HPV receive timely and appropriate care—ultimately reducing cervical cancer mortality.



Find out more on sexual and reproductive health and rights on our website.

In remote areas, crisis settings, or in response to neglected health challenges, community health workers (CHWs)—peer educators, outreach agents, and trained facilitators—are often the first, and sometimes the only, link to prevention and care. In 2024, L'Initiative stepped up its support for their professionalization through skill-building, formal recognition of their role, and integration into national health policies. Ensuring quality care that meets local needs requires fully recognizing those who provide it every day.

Recognizing and training COMMUNITY HEALTH WORKERS



STEPHANE D'ALMEIDA,
Project Manager, L'Initiative

In Mauritania, many people are unaware they carry the virus. HIV strikes where attention fades—at the heart of vulnerable communities struggling to access prevention, testing and treatment. In the hardest-hit areas, women and men from within those communities step forward—quietly, without judgment—to offer care and support. These are community health workers. They listen, support, reassure, and build bridges between fragile lives and the health system. L'Initiative supports them so that those who are HIV-negative stay protected, and those living with the virus receive timely care and the dignity they deserve.

FRAGILE SETTINGS

CHWs, direct access to patients in unstable areas

Reaching the most isolated

In Myanmar's remote regions, where access to care is extremely limited, L'Initiative has supported Medical Action Myanmar since 2018. In the mountainous provinces of Naga and Putao, 485 CHWs have been trained to provide quality primary healthcare, even in conflict zones and areas controlled by armed groups. With an integrated, gender-sensitive approach, these CHWs manage HIV, tuberculosis, malaria, and several noncommunicable diseases. They deliver prevention, diagnosis and treatment to the most vulnerable populations.

Caring in conflict zones

In Cameroon, conflict has led to the closure of 37% of health facilities in the Southwest and Littoral regions and the displacement of thousands. To meet the challenge, L'Initiative supports the Breaking Barriers project, led by Reach Out, to expand malaria community care in affected zones. Several interventions are deployed: vouchers have been distributed to cover the cost of certain medications, as well as transportation to health centers for severe cases. Community discussion sessions dedicated to malaria have been introduced. Strengthened support for community health workers—who are key to ensuring access to care—has also been provided. Malaria prevalence among children under 5 has dropped from 54.5% to 20.7%. The use of insecticide-treated nets is now widespread. These results show that professionalized community action saves lives—even in times of crisis.



Cameroon.
In the Southwest region, community sessions are organized to raise awareness about malaria prevention.

RESPECT FOR RIGHTS

664 health professionals trained

Caring without stigmatizing

In Mauritania, the PasserElles project—supported by L'Initiative—aims to integrate sexual and reproductive health and gender-sensitive approach in response to HIV, tuberculosis, malaria, and their coinfections. Led by Santé Sud and SOS Pairs Éducateurs, the project is based on the complementarity between community health workers, who are rooted in local realities, and medical professionals with technical expertise. By embedding both into public health services, the project fosters more inclusive care and combats gender- and sexuality-related stigma. It improves equitable access to healthcare for the most exposed populations.



Find out more on community health workers recognition on our website.

OUTLOOK FOR L'INITIATIVE, a shared perspective



**ANNE-CLAIRE
AMPROU,**
French
Ambassador for
Global Health



JÉRÉMIE PELLET,
CEO,
Expertise France

“
*L'Initiative is
one of our most
valuable tools
reflecting France's
commitment to
global health.*

— ANNE-CLAIRE AMPROU

As partner countries continue to face immense needs in the fight against pandemics, France is determined to strengthen its engagement alongside multilateral institutions. Jérémie Pellet, Expertise France CEO, et Anne-Claire Amprou, French Ambassador for Global Health, take a look back on the crucial mission of L'Initiative in light of our priorities for global health and on its outlooks.

In the wake of the U.S. pullback from pandemic response, what role can France play with L'Initiative?

Anne-Claire Amprou: This retreat is worrying for many countries, particularly in Africa. But it also represents an opportunity – for France to reaffirm its commitment and make its global health action even more impactful. L'Initiative, with its agile and partnership-based approach, is one of our most valuable tools to turn that commitment into tangible action, rooted in the realities in the field. It contributes directly to implementing France's renewed global health strategy, launched in 2023.

Jérémie Pellet: This disengagement reminds us of the importance of stable and predictable international collaboration to combat pandemics. L'Initiative must stay the course in 2025 – and during the next cycle from 2026



Rwanda.
The Tubiteho project is working to establish a sustainable harm reduction service offering for people who use drugs.

to 2028—because it serves as an effective bridge between bilateral cooperation and major multilateral institutions. It delivers a tailored, agile response aligned with countries’ needs.

What is L’Initiative’s added value?

Jérémie Pellet: L’Initiative’s model combines funding, technical assistance, and proximity to local stakeholders. It has proven its effectiveness in linking France’s bilateral and multilateral efforts while remaining close to countries’ realities.

Anne-Claire Amprou: This approach is delivering results. Faced with increasingly systemic health crises, we need more integrated responses – involving a wider range of actors and national governments. Building

on what works allows us to align efforts and leverage those of multilateral partners for greater and more sustainable impact.

Should L’Initiative evolve?

Anne-Claire Amprou: That reflection is already underway. L’Initiative must continue to serve France’s global health goals by supporting the sustainable strengthening of health systems and the training of health professionals in the most structurally fragile countries. It also includes building the capacity of community actors and health mediators – who are essential to reaching the most underserved populations and have been a focus of L’Initiative’s attention since its creation.

Jérémie Pellet: Absolutely. Prioritizing the reinforcement

“
L’Initiative must stay the course in 2025—and during the next cycle from 2026 to 2028.

JÉRÉMIE PELLET

of national health services will ensure long-term progress while showcasing French expertise in global health – all while preserving what makes L’Initiative strong: its anchoring in field realities. ●

Contact

L'Initiative

Sida, tuberculose, paludisme

initiative.expertisefrance.fr/en

Expertise France

40 boulevard de Port-Royal

75005 Paris

+33 1 70 82 70 82

 [ef.initiative](https://www.facebook.com/ef.initiative)

 [ef_initiative](https://twitter.com/ef_initiative)

 [L'Initiative - Expertise France](https://www.linkedin.com/company/linitiative-expertise-france)

 initiative.bsky.social



IMPLEMENTED
BY



FUNDED AND
UNDER THE
SUPERVISION OF



AS PART
OF THE FRENCH
CONTRIBUTION TO

